

Local Council Specify Fibrelite's Anti-Slip Trench Panels for Busy City-Centre Market

Market Leader for Light-Duty Trench Panel



One of the 8 trench panel installations in the busy city-centre market

Coloured Trench Covers

A local UK council has specified Fibrelite FM45 trench panels for a busy city-centre market. A series of 8 trenches were previously covered by traditional concrete panels but with constant heavy foot traffic the covers had crumbled and created trip hazards. What's more the concrete was extremely heavy so difficult and unsafe to remove. Metal covers were considered as a replacement but the following benefits meant Fibrelite's GRP composite covers were preferred:

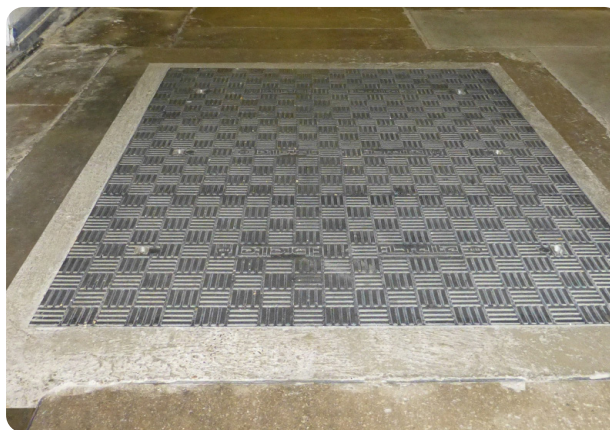
- Lightweight for easy and safe manual removal
- Non-slip properties equivalent to a high grade road
- Will not corrode/rust
- Will not be stolen as there is zero resale value to the scrap market
- Chemically inert
- Extremely strong and durable
- Significantly less CO2 footprint in production and transport

British Manufacturing at its Best

With many lengths, widths and depths of trench covers available together with the option of adding colour and logos, Fibrelite's trench covers offer an extremely versatile solution. All covers are BS EN 124 load rated, from A15 (1.5 tonne, pedestrian traffic) to E600 (60 tonne). Suitable for many applications ranging from stadiums, water sewerage treatment plants, retail, industrial and commercial developments to airports, ports and dockyards.



No trips, slips or falls. Fibrelite's GRP composite covers alongside the old concrete trench panels



Fibrelite's GRP composite access covers: Unrivalled strength, robustness and durability

For more information on Fibrelite's product range please contact us:

UK Office:

Tel: + 44 (0) 1756 799 773

Email: covers@fibrelite.com

US Office:

Tel: + 1 919 209 2404

Email: covers@fibrelite.com

Malaysia Office (Asia Pacific):

Tel: + 44 (0) 1756 799 773

Email: covers@fibrelite.com