

High Voltage Electricity Substation



Fibrelite Replace Heavy Duty Cast Iron and Concrete Trench Covers in a High Voltage Electrical Substation



Fibrelite's lightweight trench covers

Helping to Create a Safer and More Efficient Working Environment

The main reasons why Fibrelite covers were specified by for this application:

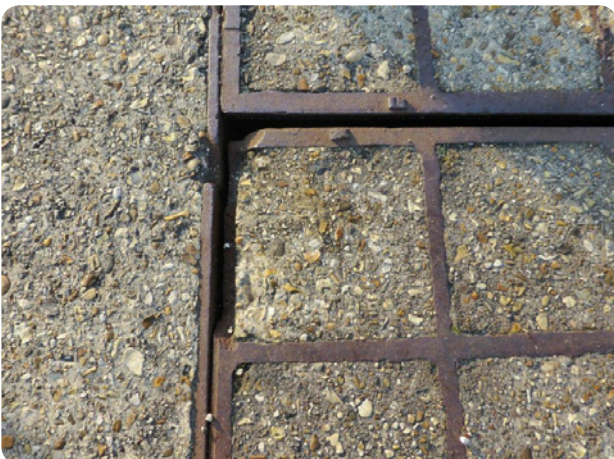
- Lightweight reduced lifting and handling injuries: the covers can be easily removed with two people using the proprietary lifting handles
- Easy to install: because the covers are lightweight and they are located in a frame the installation is straightforward
- Guaranteed structural performance: all covers for this application were tested to EN124 D400 load rating
- Range of sizes: 800 – 1600mm spans available with a D400 load rating
- Training for installation team: this is available at the factory

Range of Lengths Available

Fibrelite's trench access covers are a standard width of 450mm with a range of length options from 800mm to 1600mm. For larger areas of structural flooring, additional central support beams can be installed to extend the covering area.

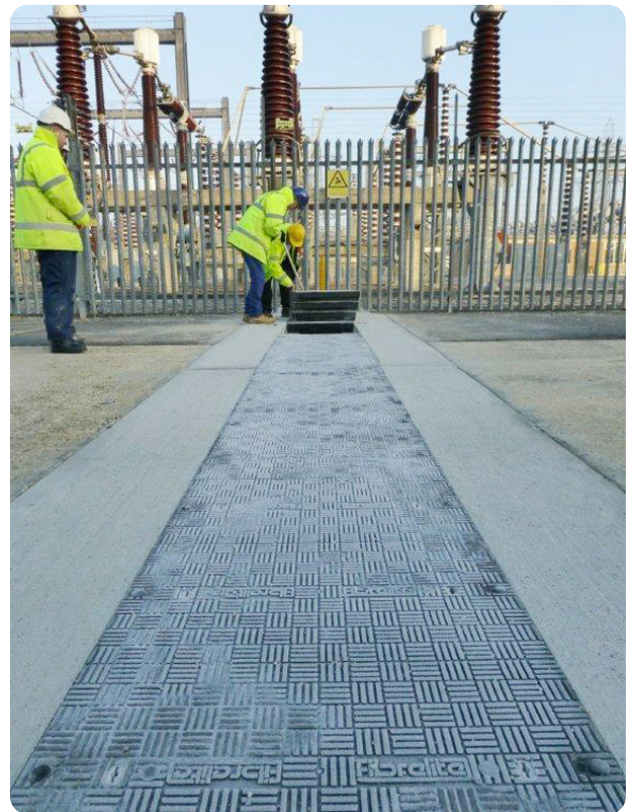
Old Installation

Previously installed extremely heavy, corroded and damaged cast iron and concrete covers.



Fibrelite's lightweight heavy duty (D400) composite trench covers have recently been specified to replace 10 metres of cast iron and concrete covers. The EN124 D400 tonne load tested lightweight covers are non-metallic, non-conductive and will not spark.

The newly installed heavy duty covers now provide safe and easy access to the underground electricity cables which run in a trench across the road. This is the main access road within the substation and is regularly used by heavy goods vehicles.



The EN124 D400 tonne load tested lightweight covers

New Installation

Fibrelite conductive D400 load rated trench covers installed on this high voltage electrical substation.



Customer Comments

"JMM Projects Limited is project managing the installation of heavy duty GFRP gratings in high voltage electrical substations for the client. During this project it was noted that some road crossings required replacement. A cast iron and concrete replacement was considered because these are still in production but the Fibrelite alternative was chosen as an alternative to trial. Discussions were held at the factory with the design team and alterations were made to suit the client's requirements and a trial was undertaken. Fibrelite also offered guidance from its own installation team who came to site to meet the installation contractor to generally give advice.

Installation was straightforward which was partly due to the lightweight covers and frame. In some installations two trenches run in parallel and now these can be replaced using the 1400 or 1600mm covers rather than two covers and frames. Generally once the covers are installed they very rarely need to be removed but when this is required the Fibrelite covers are very manageable with a two man lift using the proprietary lifting devices.

Fibrelite has offices in the UK with technical advice available at all times and working with the designers has ensured that the client has the right product for the application required."

For more information on Fibrelite's product range please contact us:

UK Office:

Tel: + 44 (0) 1756 799 773

Email: covers@fibrelite.com

US Office:

Tel: + 1 919 209 2404

Email: covers@fibrelite.com

Malaysia Office (Asia Pacific):

Tel: + 44 (0) 1756 799 773

Email: covers@fibrelite.com