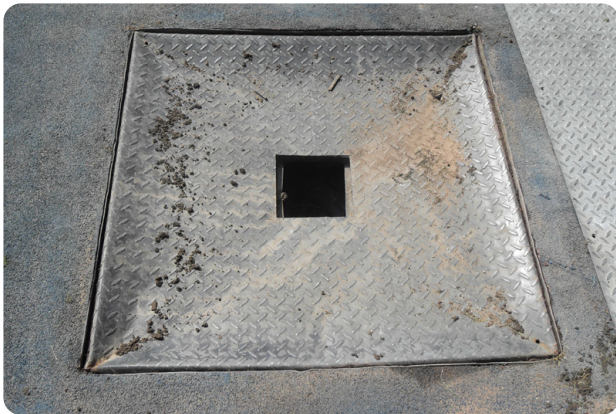


Leading Premier League Stadium: Phase 1



Fibrelite's Lightweight Coloured Composite Trench Covers Replace Damaged Steel Covers

Fibrelite's trench covers have recently been installed at a leading Premier League Stadium to replace damaged steel covers. The damage caused to the previously installed steel covers was caused by heavy vehicles requiring frequent access for concerts. The facilities management team at the Stadium also wanted to solve the manual handling and safety issues which were associated with the cumbersome steel covers previously in use.



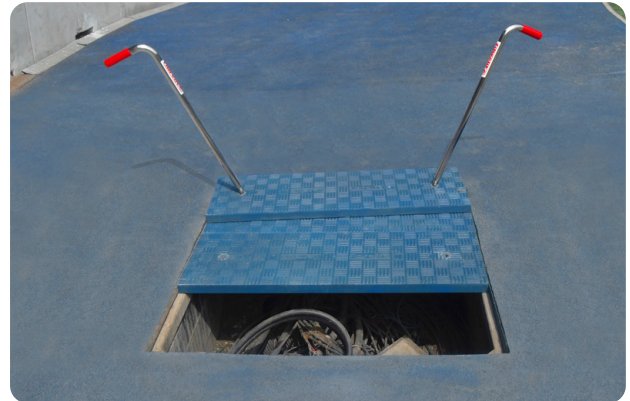
Out with the old: the damaged reinforced steel cover to be replaced by Fibrelite's trench covers



Manual handling: The previously installed damaged cover required a hydraulic lifter to remove the cover

No More Manual Handling and Lifting Injuries

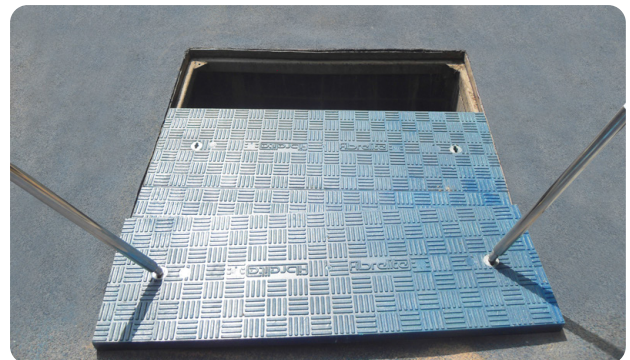
With Fibrelite's lightweight trench covers, which still reach the 10 tonne load capacity required, manual handling and lifting injuries are no longer an issue. The lightweight properties coupled with the ergonomically designed lifting aid, allows for a safe and easy removal of the composite trench covers.



Fibrelite's trench covers and ergonomically designed lifting aid allow for a safe and easy removal

Coloured Trench Covers

With many lengths, widths and depths of trench covers available together with the option of adding colour and logos, Fibrelite's trench covers offer an extremely versatile solution. All covers are BS EN 124 load rated, from A15 (1.5 tonne, pedestrian traffic) to E600 (60 tonne). Suitable for many applications ranging from stadiums, water sewerage treatment plants, retail, industrial and commercial developments to airports, ports and dockyards.



The recently installed Fibrelite coloured trench covers

Fibrelite can mould its composite covers in nearly any colour or combination of colours. The pigment is introduced directly into the resin during the moulding process, ensuring that the colouring is not merely applied to the surface but evenly and completely infused throughout the cover. This ensures that a coloured Fibrelite cover will not fade or wear over time.

For more information on Fibrelite's product range please contact us:

UK Office:

Tel: + 44 (0) 1756 799 773

Email: covers@fibrelite.com

US Office:

Tel: + 1 919 209 2404

Email: covers@fibrelite.com

Malaysia Office (Asia Pacific):

Tel: + 44 (0) 1756 799 773

Email: covers@fibrelite.com