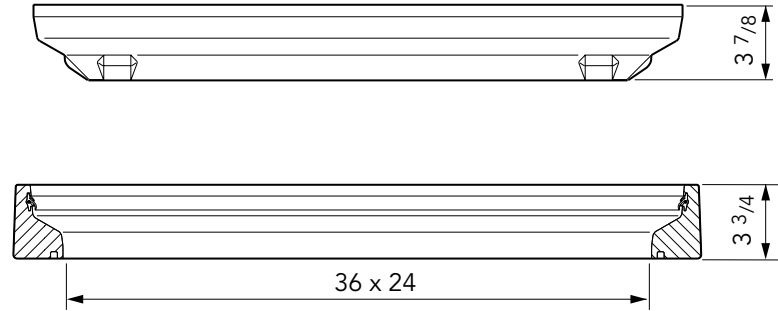
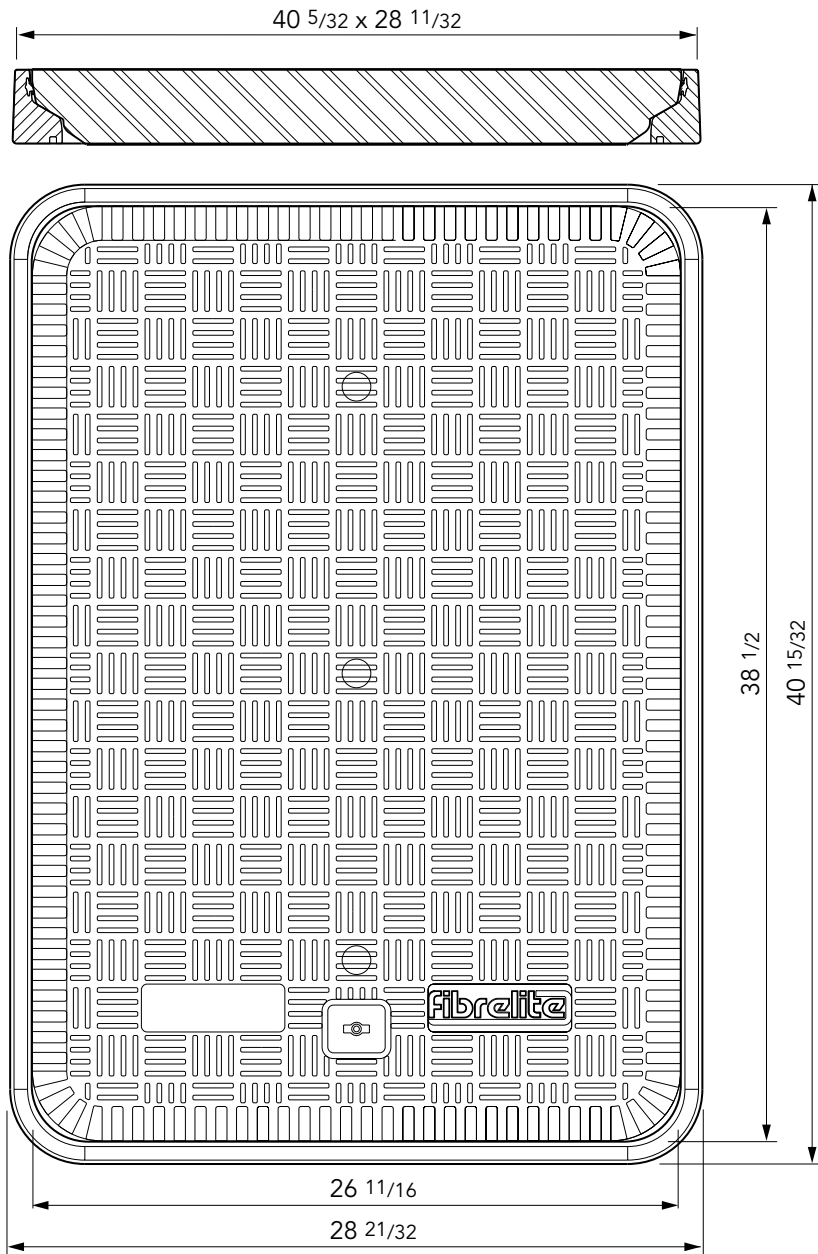


36" x 24" flat sealed composite cover with an aluminum frame.

For reference purposes only. This drawing is not a specification. Order against product code only. To enable continuous improvement of our products, the designs and specifications are subject to change without notice.

**FIBRELITE**   
PART OF OPW A  DOVER COMPANY



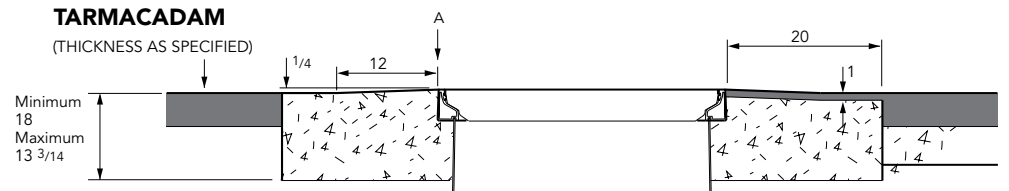
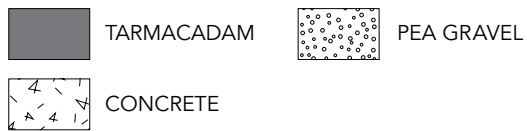
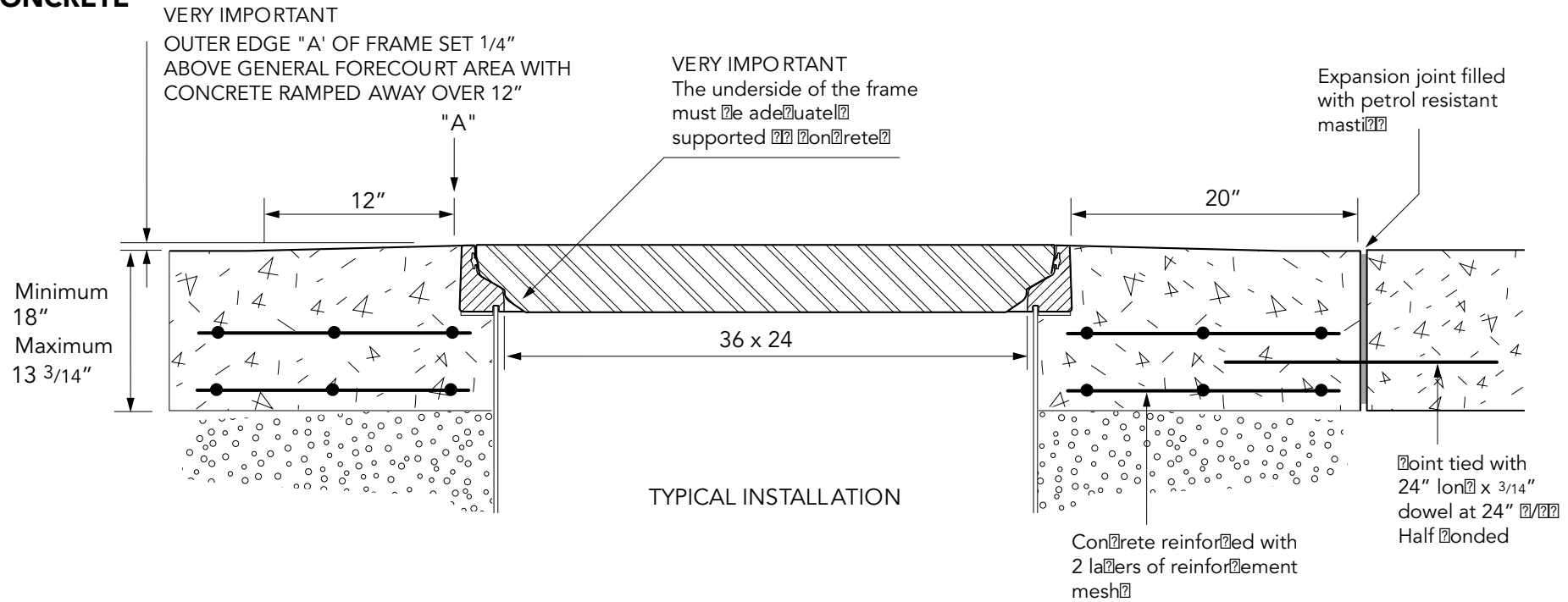
Load Rating	Cover Weight	Frame Weight
LD	40 lbs	24 lbs
SD	60 lbs	24 lbs
HD	85 lbs	24 lbs
SHD	104 lbs	29 lbs

36" x 24" flat sealed composite cover with an aluminum frame.

For reference purposes only. This drawing is not a specification. Order against product code only. To enable continuous improvement of our products, the designs and specifications are subject to change without notice.

**FIBRELITE**   
PART OF OPW A DOVER COMPANY

# CONCRETE



36" x 24" flat sealed composite cover with an aluminum frame.

For reference purposes only. This drawing is not a specification. Order against product code only. To enable continuous improvement of our products, the designs and specifications are subject to change without notice.

